

# CS 428

## Webster #4

### Readings

Fall 2022

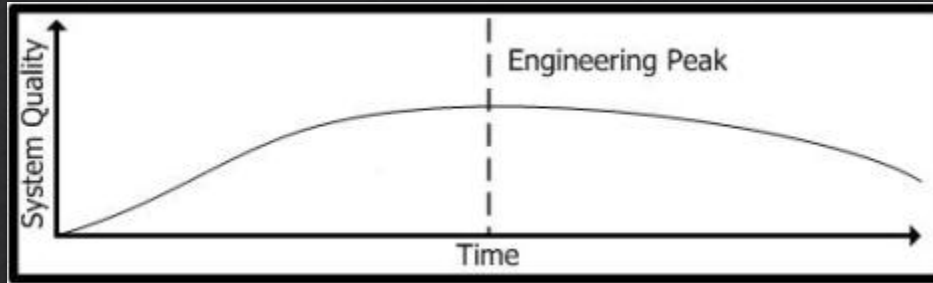
Bruce F. Webster

- ◇ Certain cycle mismatches for organizations looking to adopt new technologies – keep your eyes open for these:
- ◇ **Firefly**: initial release is inadequate; you wait for the next; the next release is not quite functional enough, either; rinse and repeat until you finally give up.
- ◇ **Underdone**: new release of established technology that's not quite ready for production use
- ◇ **Conveyor Belt**: limited lifespan – challenge to make use of it and then migrate off before it goes away.
- ◇ **Landfill**: great promise (hype), but dead on (or soon after) arrival.

## Getting Technology Lifecycles in Sync (Baseline, 2009)

[\[Link\]](#)





- System/product quality rises over time to a peak value and then starts to decline.
- Why?
  - The **developer loses conceptual control** of the system (bloat, loss of personnel, organizational changes)
  - **Software rot** sets in (piecemeal changes, growing incompatibilities w/external interfaces)
  - The enhanced system finally **outgrows its original foundation**
  - Market or **business needs shift** beyond the product's fundamental design
  - The developer begins to add “**blue sky**”/”**kitchen sink**” **enhancements**
  - **Backward compatibility** is maintained at all costs

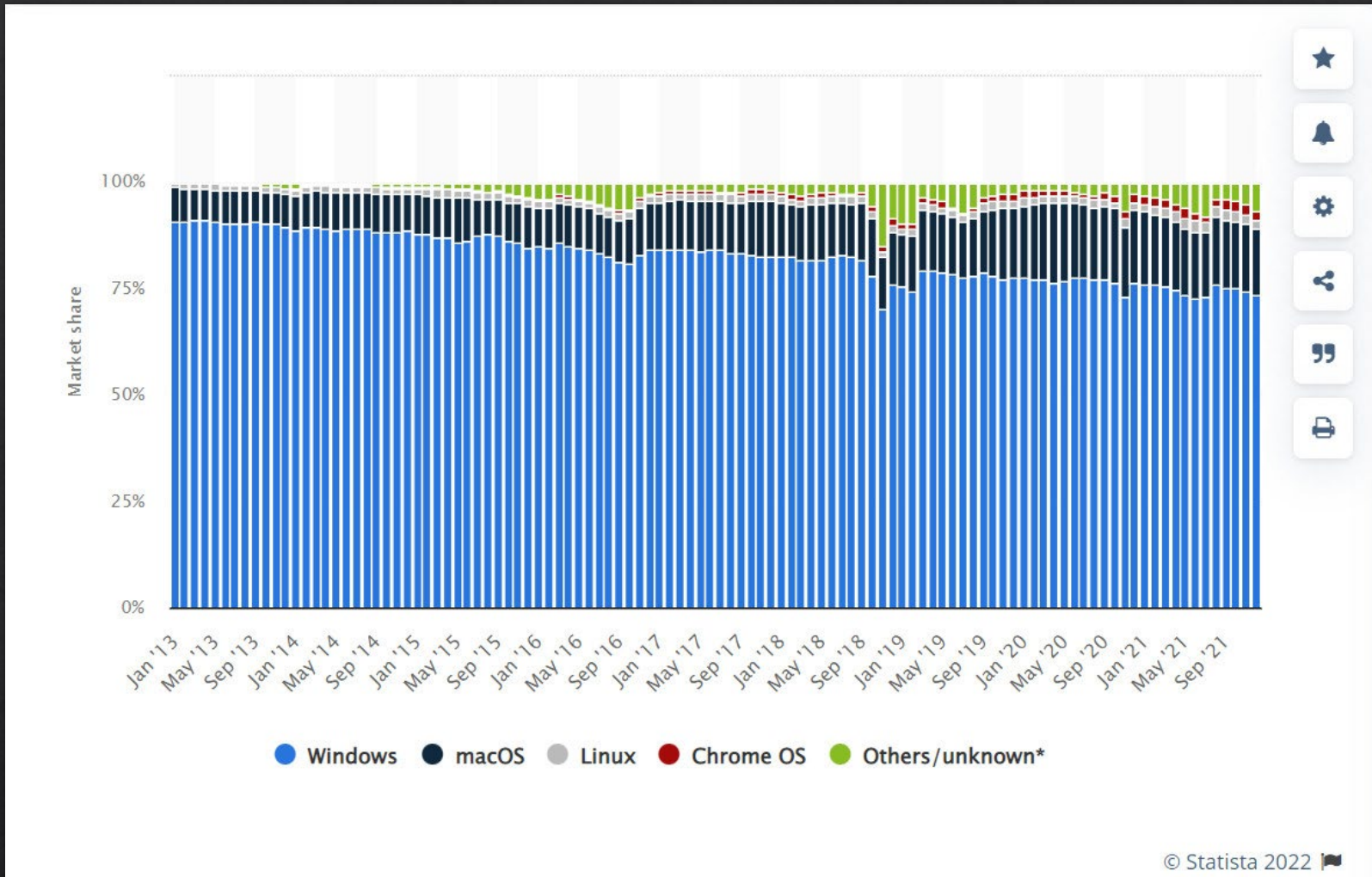
The Arc of Engineering (Baseline, 2008) [[Link](#)]

◇ **Me, in 1996:**

“As impossible as it might seem, **Windows may still be dominant in 2025**, nearly 30 years from now. It may look and work a bit differently, just as phones, TVs, and cars from 30 years ago do, but the principles will be the same. Our grandchildren will wonder about the quaint relics of terminology and work flow (when was the last time you actually put gloves in a glove compartment?), but they’ll be able to clearly see the inheritance from MS-DOS/Windows to whatever they use.”

◇ As of January 2022 – see next slide.

Microsoft Windows Forever and Ever?  
(Windows Magazine, 1996) [[Link](#)]



# Windows Forever and Ever? (cont.)



- ◇ It seems that **the first sufficiently adequate technology in a given sphere usually gains broad acceptance and entrenches itself.**
- ◇ Once the technology is entrenched, **the focus is then on refinement and slow upgrading of the existing technology**, not on radical innovations and wholesale replacements.
- ◇ The investment in hardware, software, market standards, training, business process, development expertise, custom applications, and deployed environments **all argue against any broad changes**, even those introduced by Microsoft. That investment grows year by year and will dominate more, not less, as time goes on.
- ◇ Thoughts and observations?

## Windows Forever and Ever? (cont.)